

US009288744B2

(12) **United States Patent**  
**Jaakkola**

(10) **Patent No.:** **US 9,288,744 B2**  
(45) **Date of Patent:** **Mar. 15, 2016**

(54) **METHOD AND APPARATUS FOR SHARING CONNECTIVITY SETTINGS VIA SOCIAL NETWORKS**

(75) Inventor: **Mikko Lauri Antti Jaakkola**, San Diego, CA (US)

(73) Assignee: **Nokia Technologies Oy**, Espoo (FI)

(\* ) Notice: Subject to any disclaimer, the term of this patent is extended or adjusted under 35 U.S.C. 154(b) by 94 days.

(21) Appl. No.: **14/122,728**

(22) PCT Filed: **May 27, 2011**

(86) PCT No.: **PCT/IB2011/001188**  
§ 371 (c)(1),  
(2), (4) Date: **Nov. 27, 2013**

(87) PCT Pub. No.: **WO2012/164328**  
PCT Pub. Date: **Dec. 6, 2012**

(65) **Prior Publication Data**  
US 2014/0092813 A1 Apr. 3, 2014

(51) **Int. Cl.**  
*H04W 48/10* (2009.01)  
*H04W 48/16* (2009.01)  
*H04L 12/58* (2006.01)  
*H04W 12/04* (2009.01)  
(Continued)

(52) **U.S. Cl.**  
CPC ..... *H04W 48/10* (2013.01); *H04L 51/32* (2013.01); *H04W 12/04* (2013.01); *H04W 48/16* (2013.01); *H04W 84/12* (2013.01); *H04W 88/08* (2013.01)

(58) **Field of Classification Search**  
CPC ..... H04W 48/16; H04W 48/10; H04W 12/04; H04W 88/08; H04W 84/12; H04L 51/32  
See application file for complete search history.

(56) **References Cited**  
U.S. PATENT DOCUMENTS  
7,263,076 B1 8/2007 Leibovitz et al.  
7,466,810 B1 12/2008 Quon et al.  
(Continued)

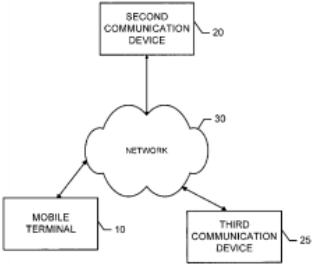
FOREIGN PATENT DOCUMENTS  
JP 2007-531568 A 11/2007  
JP 2010-518779 A 5/2010  
(Continued)

OTHER PUBLICATIONS  
Office action received for corresponding Mexican Patent Application No. MX/a/13/013784, dated Aug. 22, 2014, 4 pages.  
(Continued)

*Primary Examiner* — Brian D Nguyen  
(74) *Attorney, Agent, or Firm* — Alston & Bird LLP

(57) **ABSTRACT**  
An apparatus for enabling sharing of one or more connectivity parameters with one or more friends may include a processor and memory storing executable computer code causing the apparatus to at least perform operations including detecting one or more connection parameters and associated data of at least one access point. The computer program code may further cause the apparatus to facilitate provision of the connection parameters and associated data for inclusion within at least one profile of a user. The profile may be associated with a social network service identifying one or more relationships among one or more determined friends of the user. The computer program code may further cause the apparatus to enable provision of the connection parameters and associated data to at least one device of the user or one or more devices of the friends. Corresponding methods and computer program products are also provided.

**26 Claims, 6 Drawing Sheets**



That which is claimed:

1. A method comprising:

- detecting one or more connection parameters and associated data of at least one access point;
- facilitating provision, via a processor, of the connection parameters and associated data for inclusion within at least one profile of a user, the profile is associated with one or more social network services identifying one or more previously established relationships among one or more determined friends of the user; and
- enabling provision of the connection parameters and associated data to at least one of a device of the user or one or more devices of the friends.

<https://patents.google.com/patent/US9288744/en>

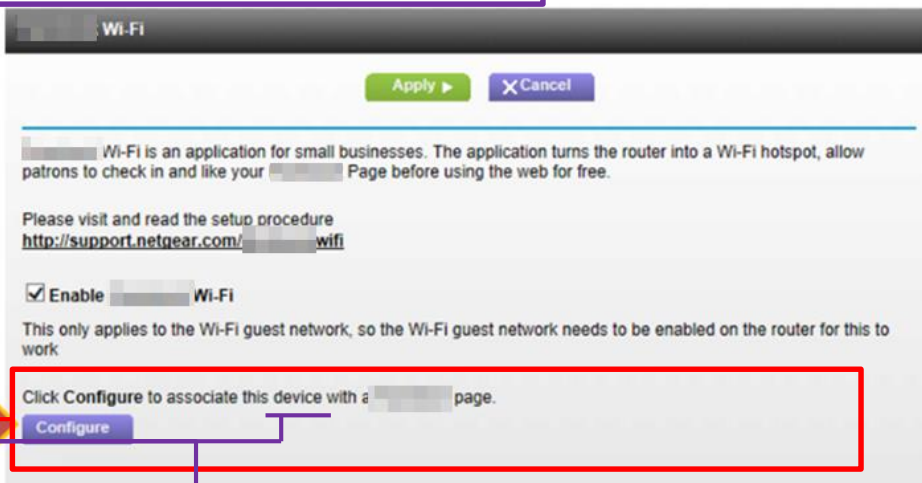
1. A method comprising:

detecting one or more connection parameters and associated data of at least one access point;

facilitating provision, via a processor, of the connection parameters and associated data for inclusion within at least one profile of a user, the profile is associated with one or more social network services identifying one or more previously established relationships among one or more determined friends of the user; and

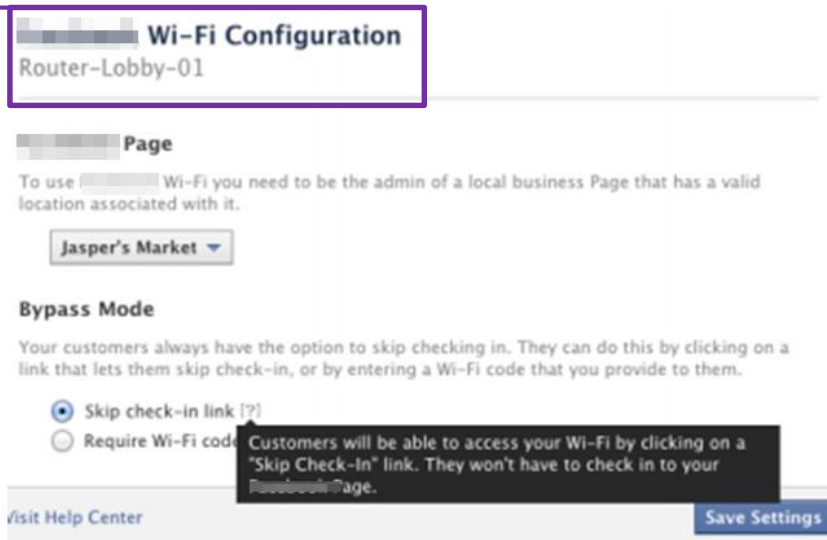
enabling provision of the connection parameters and associated data to at least one of a device of the user or one or more devices of the friends.

Click **Configure** button to associate router with a [redacted] page.



Comment:  
It is possible for businesses to offer free Wi-Fi to their customers in exchange for 'checking-in' at the location using their social media account.

At least the address of the access point must be shared with the social network when the user configures their router to use this service.



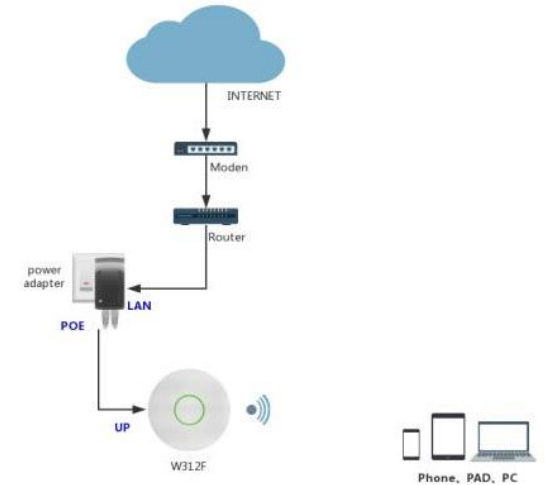
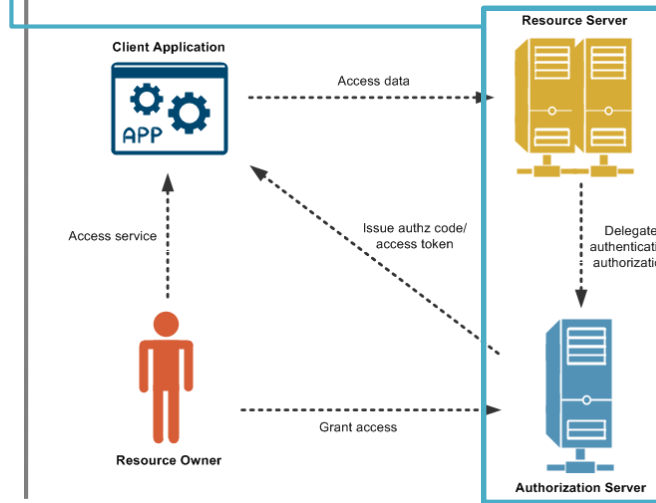
1. A method comprising:

detecting one or more connection parameters and associated data of at least one access point;

facilitating provision, via a processor of the connection parameters and associated data for inclusion within at least one profile of a user, the profile is associated with one or more social network services identifying one or more previously established relationships among one or more determined friends of the user; and

enabling provision of the connection parameters and associated data to at least one of a device of the user or one or more devices of the friends.

Guest Methods		
Guest Method	7.6	8.0
MSE Image	7.6	8.0
Authentication	Oauth with Social Credentials (ie [redacted])	Oauth with Social Credentials (ie [redacted])
Info to authenticator	Credentials only	Credentials only (OAuth) or Credentials and Packet Counts
Disconnect	None	New NSMP message for force deauthentication controlled by [redacted] policy or config (on WLC 8.0)
Requirements	Standard MSE	Standard MSE
Usage Limiting Policy	None	Time based for [redacted] and Usage Quota Limiting for Social vs non Social usage



Comment: Users request access to the Wi-Fi network and are redirected to a social network page. The user credentials are authenticated using OAuth which uses the social network's own systems to verify a user.

Wi-Fi Operation Guide

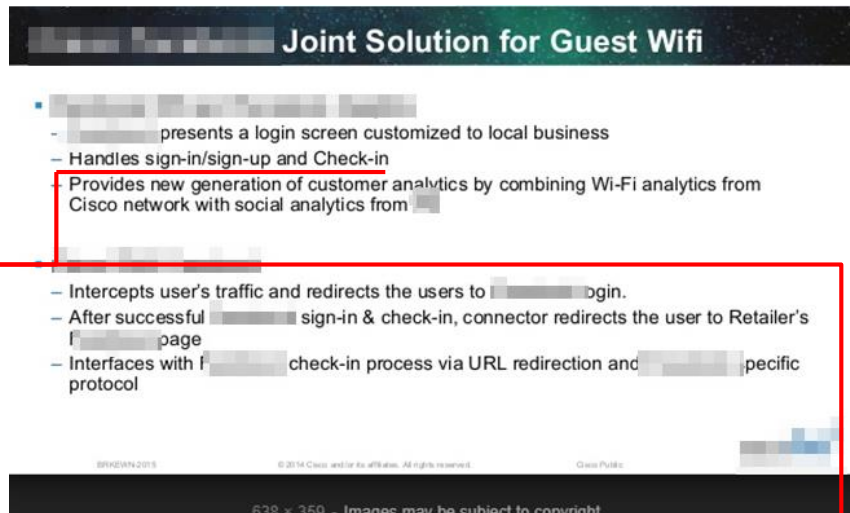
1. A method comprising:

detecting one or more connection parameters and associated data of at least one access point;

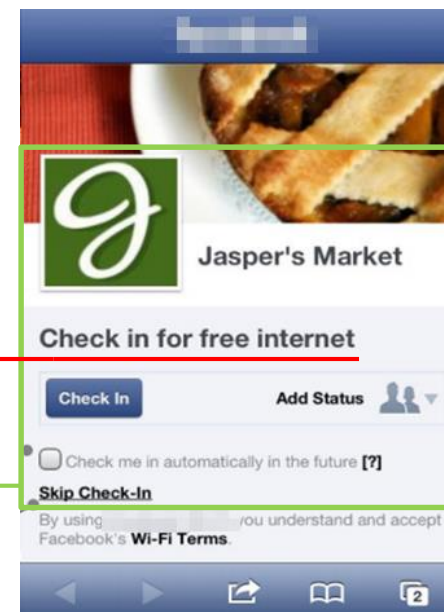
facilitating provision, via a processor, of the connection parameters and associated data for inclusion within at least one profile of a user, the profile is associated with one or more social network services

identifying one or more previously established relationships among one or more determined friends of the user; and

enabling provision of the connection parameters and associated data to at least one of a device of the user or one or more devices of the friends.



Comment: When the user has logged in using their own credentials, they are directed to the business' profile page. Here they are prompted to check in to obtain access to the Wi-Fi network.



1. A method comprising:

detecting one or more connection parameters and associated data of at least one access point;

facilitating provision, via a processor, of the connection parameters and associated data for inclusion within at least one profile of a user, the profile is associated with one or more social network services **identifying one or more previously established relationships among one or more determined friends of the user;** and

enabling provision of the connection parameters and associated data to at least one of a device of the user or one or more devices of the friends.

### 1. Turn your business into a Wi-Fi hotspot

- Customers simply check in to your location on [redacted] to connect to free Wi-Fi
- Wi-Fi codes aren't necessary and there are no new accounts to create
- Customers can manually check in or choose a setting that lets them automatically check in whenever they visit your location



Comment: Users may allow the social network to automatically check in if they have been there before. If this pre-established relationship is present then the user is automatically granted access.

You have authorized these places to automatically check you in on Facebook when you connect to their Wi-Fi:

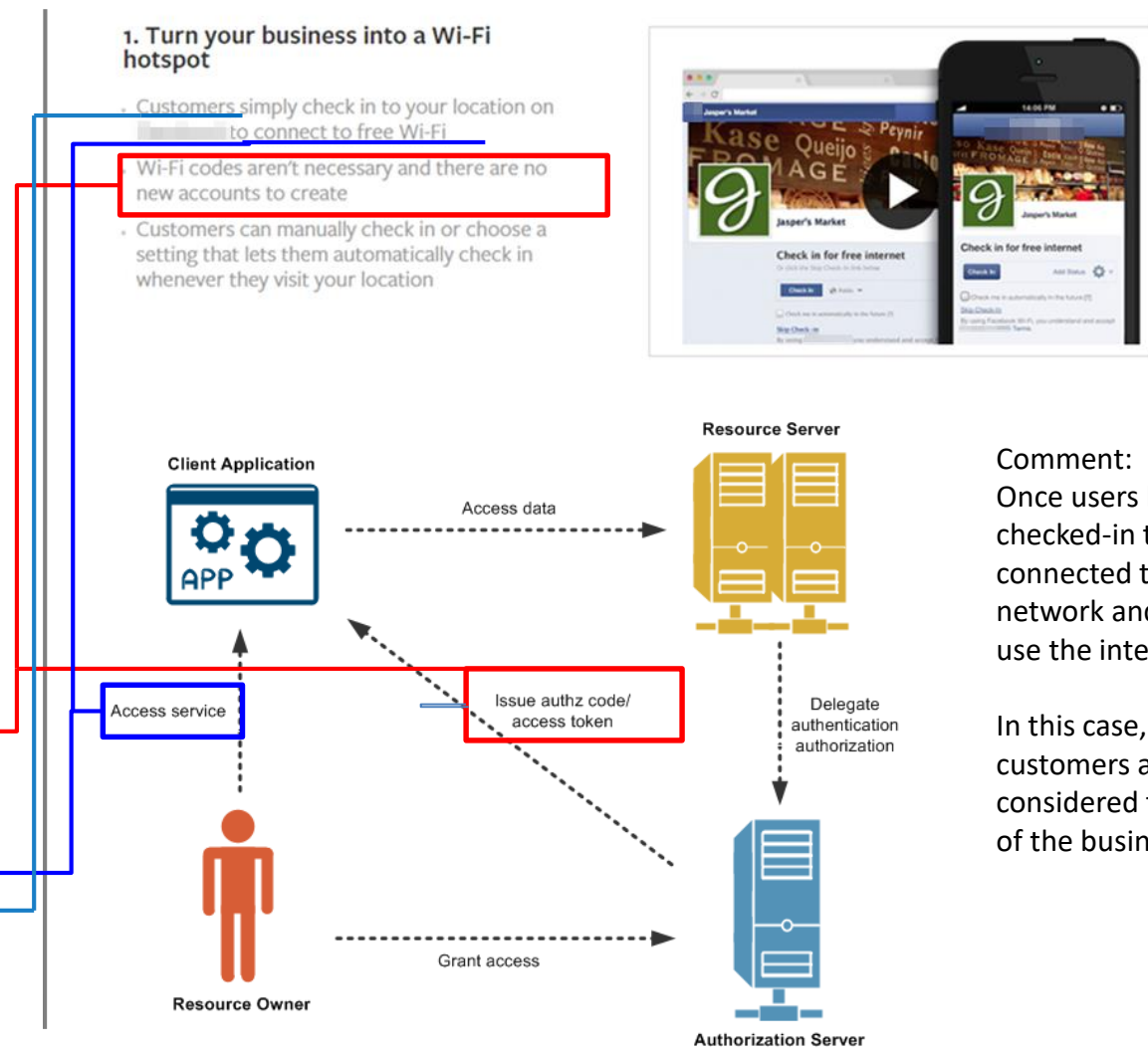
Place	Added	Privacy
Philz a [redacted]	Less than 24 hours ago	[User Icon] ▼
Red Rock Coffee	Less than 24 hours ago	[Star Icon] ▼
Coupa Cafe - Palo Alto	Less than 24 hours ago	[Globe Icon] ▼

1. A method comprising:

detecting one or more connection parameters and associated data of at least one access point;

facilitating provision, via a processor, of the connection parameters and associated data for inclusion within at least one profile of a user, the profile is associated with one or more social network services identifying one or more previously established relationships among one or more determined friends of the user; and

enabling provision of the connection parameters and associated data to at least one of a device of the user or one or more devices of the friends.



Comment:  
Once users have checked-in they are connected to the network and free to use the internet.

In this case, customers are considered friends of the business.